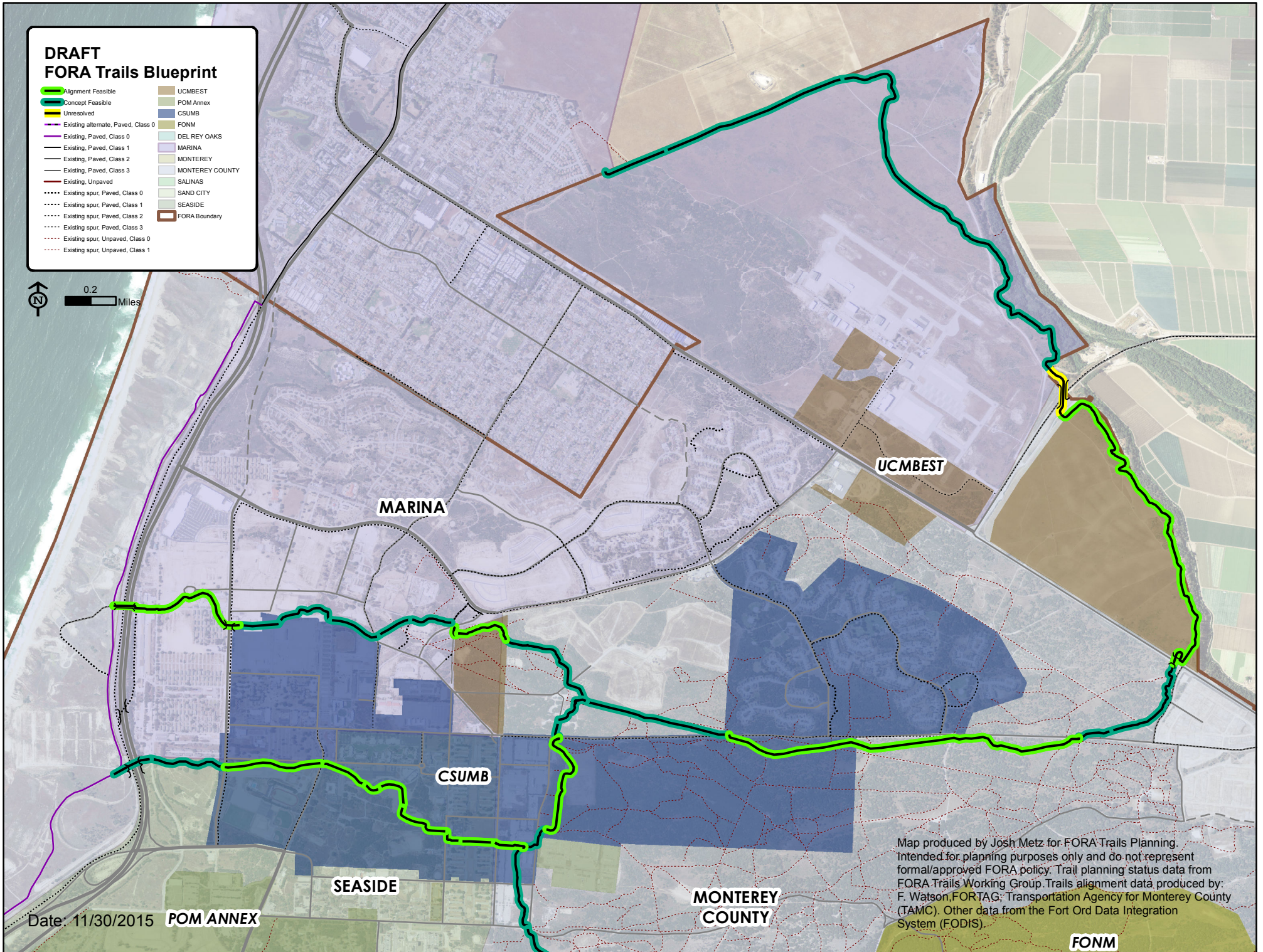
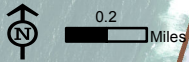


DRAFT FORA Trails Blueprint

- Alignment Feasible
- Concept Feasible
- Unresolved
- Existing alternate, Paved, Class 0
- Existing, Paved, Class 0
- Existing, Paved, Class 1
- Existing, Paved, Class 2
- Existing, Paved, Class 3
- Existing, Unpaved
- - - Existing spur, Paved, Class 0
- - - Existing spur, Paved, Class 1
- - - Existing spur, Paved, Class 2
- - - Existing spur, Paved, Class 3
- - - Existing spur, Unpaved, Class 0
- - - Existing spur, Unpaved, Class 1
- UCMBEST
- POM Annex
- CSUMB
- FONM
- DEL REY OAKS
- MARINA
- MONTEREY
- MONTEREY COUNTY
- SALINAS
- SAND CITY
- SEASIDE
- FORA Boundary



Date: 11/30/2015 POM ANNEX

Map produced by Josh Metz for FORA Trails Planning. Intended for planning purposes only and do not represent formal/approved FORA policy. Trail planning status data from FORA Trails Working Group. Trails alignment data produced by: F. Watson, FORTAG: Transportation Agency for Monterey County (TAMC). Other data from the Fort Ord Data Integration System (FODIS).

FONM